

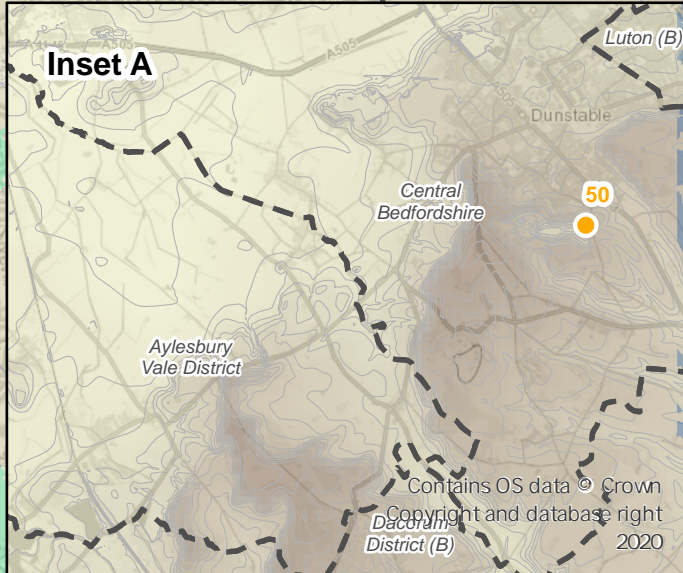
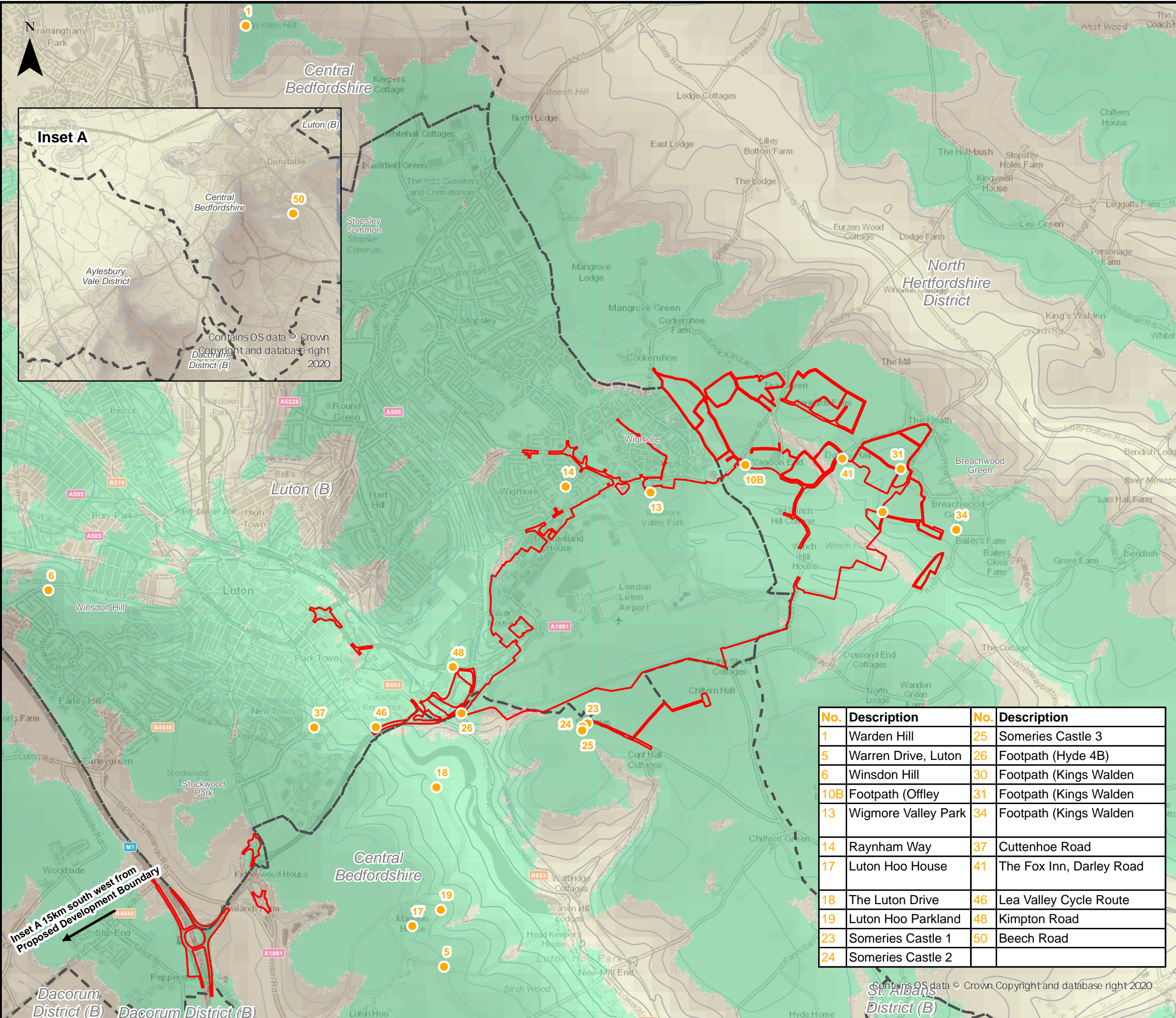
Statutory Consultation 2022

# **Preliminary Environmental Information Report**

Volume 3: Appendix 14.7

**Illustrative Visual Representations**





This drawing may contain mapping by permission of Ordnance Survey on behalf of HMSO © Crown Copyright and database rights 2019 Ordnance Survey 0100031673  
 All structure positions are indicative. The proposed works will be subject to detailed design development. The changes will be within limits of deviation specified in the Development Consent Order.

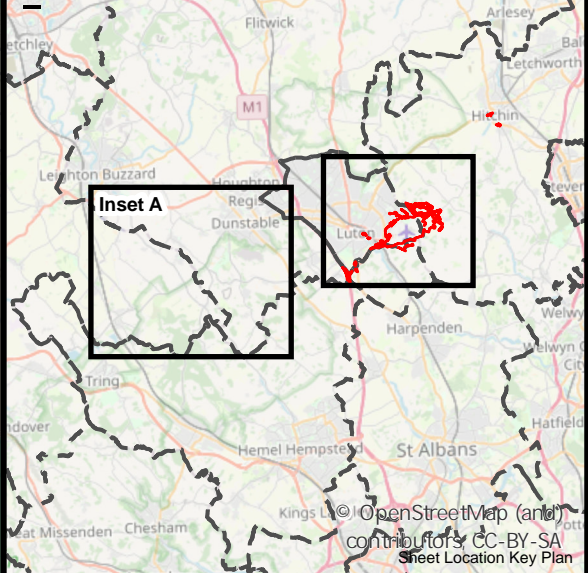
**Legend**

- Proposed Development Boundary
- Local Authorities Boundaries

**Elevation (metres above ordnance datum (AOD))**

- High : 260
- Low : 50
- Photomontage Viewpoint Locations
- Zone of Theoretical Visibility of the Proposed Development

|                  |       |         |          |          |      |
|------------------|-------|---------|----------|----------|------|
| First Issue      | AB    | PD      | CS       | 13/11/21 | P01  |
| Revision History | Drawn | Checked | Approved | Date     | Rev. |



| No. | Description          | No. | Description              |
|-----|----------------------|-----|--------------------------|
| 1   | Warden Hill          | 25  | Someris Castle 3         |
| 5   | Warren Drive, Luton  | 26  | Footpath (Hyde 4B)       |
| 6   | Winsdon Hill         | 30  | Footpath (Kings Walden)  |
| 10B | Footpath (Offley)    | 31  | Footpath (Kings Walden)  |
| 13  | Wiggmore Valley Park | 34  | Footpath (Kings Walden)  |
| 14  | Raynham Way          | 37  | Cuttenhoe Road           |
| 17  | Luton Hoo House      | 41  | The Fox Inn, Darley Road |
| 18  | The Luton Drive      | 46  | Lea Valley Cycle Route   |
| 19  | Luton Hoo Parkland   | 48  | Kimpton Road             |
| 23  | Someris Castle 1     | 50  | Beech Road               |
| 24  | Someris Castle 2     |     |                          |

**Luton Rising**  
 Our airport. Our community. Our planet.  
 Luton Rising  
 Hart House Business Centre  
 Kimpton Road, Luton, LU2 0LA  
 www.lutonrising.org.uk

**London Luton Airport  
 Development Consent Order**

Drawing Title  
 Photomontage Viewpoint Locations

|                          |         |             |          |
|--------------------------|---------|-------------|----------|
| Purpose of issue         |         | Suitability |          |
| SUITABLE FOR INFORMATION |         | S2          |          |
| Drawn                    | Checked | Approved    | Date     |
| AB                       | PD      | CS          | 30/11/21 |
| Scale                    | Size    |             |          |
| 1:30,000                 | A3      |             |          |

|                      |                 |                   |
|----------------------|-----------------|-------------------|
| DCO Application Ref. | APFP Regulation | DCO Document Ref. |
| TR020001             |                 |                   |

|  |          |
|--|----------|
| Drawing Number   | Revision |
| LLADCO-3C-ARP-0000-DR-YE-0199  | P01      |
| Project - Phase - Originator - Asset/Zone - Sub-Asset - Type - Discp. - Number |          |

**Inset A 15km south west from Proposed Development Boundary**



## Representative Viewpoint 1 : Warden Hill

Illustrative visual representation based on winter viewpoint photography.  
Refer to Appendix 14.6 in Volume 3 of this PEIR for corresponding viewpoint information



Existing View



Illustrative Wireline of Max. Parameters (Viewing Distance 300mm)



## Representative Viewpoint 1 : Warden Hill

Illustrative visual representation based on winter viewpoint photography.  
Refer to Appendix 14.6 in Volume 3 of this PEIR for corresponding viewpoint information



Illustrative Wireline of Max. Parameters (Viewing Distance 500mm)



## Representative Viewpoint 5 : Warren Drive, Luton

Illustrative visual representation based on winter viewpoint photography.  
Refer to Appendix 14.6 in Volume 3 of this PEIR for corresponding viewpoint information



Existing View



Illustrative Wireline of Max. Parameters (Viewing Distance 300mm)



**Representative Viewpoint 5 : Warren Drive, Luton**

Illustrative visual representation based on winter viewpoint photography.  
Refer to Appendix 14.6 in Volume 3 of this PEIR for corresponding viewpoint information



**Illustrative Wireline of Max. Parameters (Viewing Distance 500mm)**



## Representative Viewpoint 6 : Winsdon Hill

Illustrative visual representation based on winter viewpoint photography.  
Refer to Appendix 14.6 in Volume 3 of this PEIR for corresponding viewpoint information



Existing View



Illustrative Wireline of Max. Parameters (Viewing Distance 300mm)



## Representative Viewpoint 6 : Winsdon Hill

Illustrative visual representation based on winter viewpoint photography.  
Refer to Appendix 14.6 in Volume 3 of this PEIR for corresponding viewpoint information



Illustrative Wireline of Max. Parameters (Viewing Distance 500mm)



**Representative Viewpoint 10B : Footpath (Offley 01)**

Illustrative visual representation based on winter viewpoint photography.  
Refer to Appendix 14.6 in Volume 3 of this PEIR for corresponding viewpoint information



**Existing View**



**Illustrative Block Form of Max. Parameters (Viewing Distance 300mm)**



Illustrative visual representation based on winter viewpoint photography.  
Refer to Appendix 14.6 in Volume 3 of this PEIR for corresponding viewpoint information



Existing View



Illustrative Block Form of Max. Parameters (Viewing Distance 300mm)